

Replacing the Flash

The GC2 has a limited-life flash that requires occasional replacement. To replace an expired flash, please follow the instructions below.

- 1 With the GC2 open, make sure the LCD screen is fully lowered into the base.
- 2 Using a flat head screwdriver (not provided), loosen the two screws connecting the expired flash to the GC2 housing until the screws spin freely.

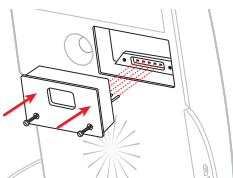
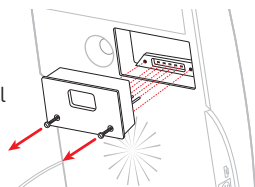
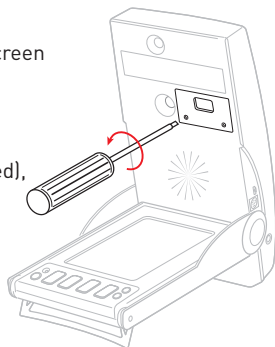
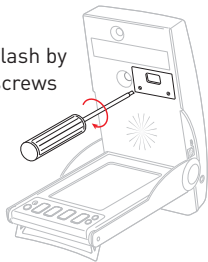
NOTE: Screws are attached to the removable flash unit. **DO NOT** attempt to pull screws out by themselves.

- 3 Grabbing both screws, gently remove the expired flash from the GC2. If necessary, pull against the screws in an alternating pattern to loosen the flash until free.

- 4 Carefully align the new flash unit with the empty compartment. **MAKE SURE PINS ON BACK OF FLASH ARE PROPERLY ALIGNED WITH PIN RECEPTACLES INSIDE GC2.** Gently but firmly insert the flash into place.

- 5 Secure the new flash by tightening both screws until snug.

DO NOT OVER-TIGHTEN SCREWS.



Need a new flash?

New flash units may be purchased by contacting your Foresight Sports retailer or representative today.