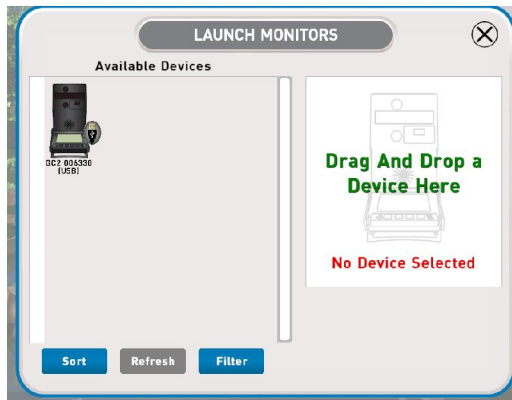


How do I select a device to connect to the FSX software?

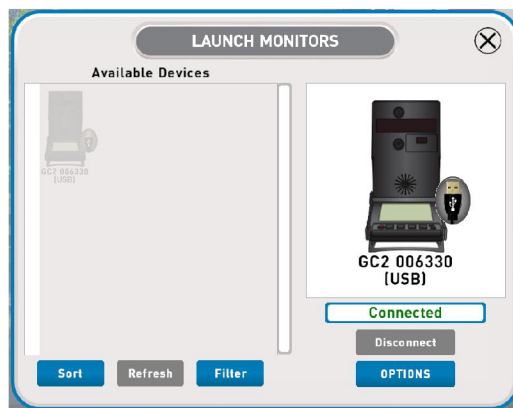
1. Click on the Device icon in the bottom right corner of the main menu:



2. Once the devices window appears, all device that are connected to the computer will be listed under the available devices portion.



3. Select the device you wish to connect and then drag and drop it into the right panel.



4. If a device is connected and not appearing be sure to check the **FILTER** button and enable each filter representing the connection you are attempting to use.
5. If you wish to have a left and right handed device be sure to enable this once the first device is connected by selecting the **OPTIONS** button under the device on the right and then enabling the connection type you wish to make.
6. If you have recently connected a new device to the computer and know that the filter is already enabled, then please select the **REFRESH** button to have the software check all valid connection again.